

| PM 1 | | | ICS 1 | | | | |
|---------|---------------|------------------|---------------|-------------|-----------------|-----------------------|--|
| Typ | Nr katalogowy | Typ korpusu | Nr katalogowy | Typ zaworu | Element roboczy | Pokrywa 1 zaw. pilot. | |
| PM 1-5 | 027F3001 | ICV 25 PM korpus | 027H2119 | ICS 1-25-5 | 027H2201 | 027H2172 | |
| PM 1-10 | 027F3002 | ICV 25 PM korpus | 027H2119 | ICS 1-25-10 | 027H2202 | 027H2172 | |
| PM 1-15 | 027F3003 | ICV 25 PM korpus | 027H2119 | ICS 1-25-15 | 027H2203 | 027H2172 | |
| PM 1-20 | 027F3004 | ICV 25 PM korpus | 027H2119 | ICS 1-25-20 | 027H2204 | 027H2172 | |
| PM 1-25 | 027F3005 | ICV 25 PM korpus | 027H2119 | ICS 1-25-25 | 027H2200 | 027H2172 | |
| PM 1-32 | 027F3006 | ICV 32 PM korpus | 027H3129 | ICS 1-32 | 027H3200 | 027H3172 | |
| PM 1-40 | 027F3007 | ICV 40 PM korpus | 027H4128 | ICS 1-40 | 027H4200 | 027H4172 | |
| PM 1-50 | 027F3008 | ICV 50 PM korpus | 027H5127 | ICS 1-50 | 027H5200 | 027H5172 | |
| PM 1-65 | 027F3009 | ICV 65 PM korpus | 027H6128 | ICS 1-65 | 027H6200 | 027H6172 | |

2015_11_06

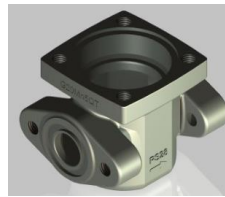
| PM 3 | | | ICS 3 | | | | |
|----------------|-----------------|-------------------------|-----------------|-----------------|-----------------|-----------------------|--|
| Typ | Nr katalogowy | Typ korpusu | Nr katalogowy | Typ zaworu | Element roboczy | Pokrywa 3 zaw. pilot. | |
| PM 3-5 | 027F3010 | ICV 25 PM korpus | 027H2119 | ICS 3-25-5 | 027H2201 | 027H2173 | |
| PM 3-10 | 027F3011 | ICV 25 PM korpus | 027H2119 | ICS 3-25-10 | 027H2202 | 027H2173 | |
| PM 3-15 | 027F3012 | ICV 25 PM korpus | 027H2119 | ICS 3-25-15 | 027H2203 | 027H2173 | |
| PM 3-20 | 027F3013 | ICV 25 PM korpus | 027H2119 | ICS 3-25-20 | 027H2204 | 027H2173 | |
| PM 3-25 | 027F3014 | ICV 25 PM korpus | 027H2119 | ICS 3-25-25 | 027H2200 | 027H2173 | |
| PM 3-32 | 027F3015 | ICV 32 PM korpus | 027H3129 | ICS 3-32 | 027H3200 | 027H3173 | |
| PM 3-40 | 027F3016 | ICV 40 PM korpus | 027H4128 | ICS 3-40 | 027H4200 | 027H4173 | |
| PM 3-50 | 027F3017 | ICV 50 PM korpus | 027H5127 | ICS 3-50 | 027H5200 | 027H5173 | |
| PM 3-65 | 027F3018 | ICV 65 PM korpus | 027H6128 | ICS 3-65 | 027H6200 | 027H6173 | |



Przykład 1:
Zawór PM 3-40 o numerze katalogowym 027F3016

zamieniamy na ICS:

1. ICV 40 PM korpus o numerze 027H4128 +
2. ICS 3-40 Element roboczy 027H4200 +
3. Pokrywa na 3 zaw. pilotowe 027H4173



| PMLX | | | ICLX | | | |
|----------------|-----------------|-------------------------|-----------------|----------------|---------------------------|--|
| Typ | Nr katalogowy | Typ korpusu | Nr katalogowy | Typ zaworu | Element roboczy z pokrywą | |
| PMLX 32 | 027F3032 | ICV 32 PM korpus | 027H3129 | ICLX 32 | 027H3204 | |
| PMLX 40 | 027F3033 | ICV 40 PM korpus | 027H4128 | ICLX 40 | 027H4204 | |
| PMLX 50 | 027F3034 | ICV 50 PM korpus | 027H5127 | ICLX 50 | 027H5204 | |
| PMLX 65 | 027F3035 | ICV 65 PM korpus | 027H6128 | ICLX 65 | 027H6204 | |

| PML | | | ICLX | | | |
|--------|---------------|------------------|---------------|------------|---------------------------|--|
| Typ | Nr katalogowy | Typ korpusu | Nr katalogowy | Typ zaworu | Element roboczy z pokrywą | |
| PML 32 | 027F3020 | ICV 32 PM korpus | 027H3129 | ICLX 32 | 027H3204 | |
| PML 40 | 027F3021 | ICV 40 PM korpus | 027H4128 | ICLX 40 | 027H4204 | |
| PML 50 | 027F3022 | ICV 50 PM korpus | 027H5127 | ICLX 50 | 027H5204 | |
| PML 65 | 027F3023 | ICV 65 PM korpus | 027H6128 | ICLX 65 | 027H6204 | |



Przykład 2:
Zawór PMLX 65 o numerze katalogowym 027F3035

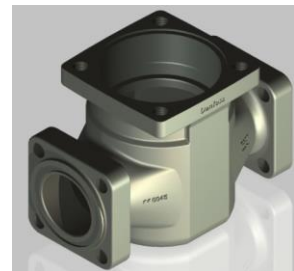
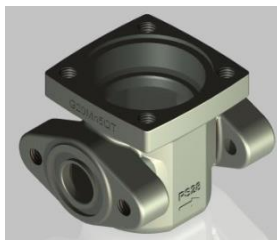
zamieniamy na ICLX:

1. ICV 65 PM korpus o numerze 027H6128 +
2. ICLX 65 Element roboczy z pokrywą 027H6204



| MEV | | | ICM | | | | | Napęd ICAD | |
|----------|------|---------------|------------------|---------------|------------|---------------------------|------|------------|---------------|
| Typ | kv | Nr katalogowy | Typ korpusu | Nr katalogowy | Typ zaworu | Element roboczy z pokrywa | kv | Typ | Nr katalogowy |
| MEV 80-6 | 3,3 | 027F3169 | ICV 25 PM korpus | 027H2119 | ICM 25-A | 027H2180 | 6,0 | ICAD 600A | 027H9075 |
| MEV 80-7 | 5,0 | 027F3170 | ICV 25 PM korpus | 027H2119 | ICM 25-A | 027H2180 | 6,0 | ICAD 600A | 027H9075 |
| MEV 125 | 7,0 | 027F3171 | ICV 32 PM korpus | 027H3129 | ICM 32-A | 027H3180 | 9,0 | ICAD 600A | 027H9075 |
| MEV 200 | 10,0 | 027F3172 | ICV 40 PM korpus | 027H4128 | ICM 40-A | 027H4180 | 15,0 | ICAD 1200A | 027H9077 |
| MEV 300 | 15,5 | 027F3173 | ICV 50 PM korpus | 027H5127 | ICM 50-A | 027H5180 | 23,0 | ICAD 1200A | 027H9077 |
| MEV 500 | 23,0 | 027F3174 | ICV 65 PM korpus | 027H6128 | ICM 65-A | 027H6180 | 35,0 | ICAD 1200A | 027H9077 |

| MRV | | | ICM | | | | | Napęd ICAD | |
|--------|------|---------------|------------------|---------------|------------|---------------------------|------|------------|---------------|
| Typ | kv | Nr katalogowy | Typ korpusu | Nr katalogowy | Typ zaworu | Element roboczy z pokrywa | kv | Typ | Nr katalogowy |
| MRV 15 | 4,0 | 027F3082 | ICV 25 PM korpus | 027H2119 | ICM 25-A | 027H2180 | 6,0 | ICAD 600A | 027H9075 |
| MRV 20 | 7,0 | 027F3083 | ICV 25 PM korpus | 027H2119 | ICM 25-B | 027H2181 | 12,0 | ICAD 600A | 027H9075 |
| MRV 25 | 11,5 | 027F3084 | ICV 25 PM korpus | 027H2119 | ICM 25-B | 027H2181 | 12,0 | ICAD 600A | 027H9075 |
| MRV 32 | 17,2 | 027F3085 | ICV 32 PM korpus | 027H3129 | ICM 32-B | 027H3181 | 17,0 | ICAD 600A | 027H9075 |
| MRV 40 | 30,0 | 027F3086 | ICV 40 PM korpus | 027H4128 | ICM 40-B | 027H4181 | 26,0 | ICAD 1200A | 027H9077 |
| MRV 50 | 43,0 | 027F3087 | ICV 50 PM korpus | 027H5127 | ICM 50-B | 027H5181 | 40,0 | ICAD 1200A | 027H9077 |
| MRV 65 | 72,0 | 027F3088 | ICV 65 PM korpus | 027H6128 | ICM 65-B | 027H6181 | 70,0 | ICAD 1200A | 027H9077 |



Korpusy zaworów ICV zamienne za zawory Hansen, Parker

Dzięki korpusom z kołnierkami i wymiarami montażowymi firmy Hansen lub Parker można zastąpić zawory główne tych firm, zaworami z grupy ICV

| Nazwa firmy | DN | Nr katalogowy | Typ korpusu |
|----------------|----|---------------|---------------|
| Hansen, Parker | 25 | 027H2304 | ICV 25 (H)A4A |
| Parker | 32 | 027H3130 | ICV 32 A4A |
| Hansen | 32 | 027H3131 | ICV 32 HA4A |
| Hansen, Parker | 40 | 027H4129 | ICV 40 (H)A4A |
| Hansen, Parker | 50 | 027H5128 | ICV 50 (H)A4A |
| Hansen, Parker | 65 | 027H6129 | ICV 65 (H)A4A |



Zawory ICSH



| PM 1 (z EVM NC) | | ICSH | | | | |
|-----------------|---------------|------------------|---------------|------------|-----------------|---------------------------|
| Typ | Nr katalogowy | Typ korpusu | Nr katalogowy | Typ zaworu | Element roboczy | Pokrywa ¹ ICSH |
| PM 1-5 | 027F3001 | ICV 25 PM korpus | 027H2119 | ICSH 25-5 | 027H2201 | 027H0159 |
| PM 1-10 | 027F3002 | ICV 25 PM korpus | 027H2119 | ICSH 25-10 | 027H2202 | 027H0159 |
| PM 1-15 | 027F3003 | ICV 25 PM korpus | 027H2119 | ICSH 25-15 | 027H2203 | 027H0159 |
| PM 1-20 | 027F3004 | ICV 25 PM korpus | 027H2119 | ICSH 25-20 | 027H2204 | 027H0159 |
| PM 1-25 | 027F3005 | ICV 25 PM korpus | 027H2119 | ICSH 25-25 | 027H2200 | 027H0159 |
| PM 1-32 | 027F3006 | ICV 32 PM korpus | 027H3129 | ICSH 32 | 027H3200 | 027H0164 |
| PM 1-40 | 027F3007 | ICV 40 PM korpus | 027H4128 | ICSH 40 | 027H4200 | 027H0169 |
| PM 1-50 | 027F3008 | ICV 50 PM korpus | 027H5127 | ICSH 50 | 027H5200 | 027H0174 |
| PM 1-65 | 027F3009 | ICV 65 PM korpus | 027H6128 | ICSH 65 | 027H6200 | 027H0179 |

¹ pokrywa ICSH z 2 x EVM + zaślepka i korek A+B